

RT-99 Motion Sensor Board User Manual

Chapter 1

This is a preliminary user manual of motion sensor board to instruct you how to use this motion sensor board properly. RT-99 is the major parts of the convert tracking case. Please refer to the picture below.

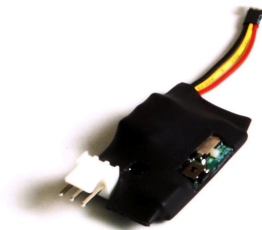
©2008 San Jose Technology, Inc. All specifications subject to change without notice.



This is the entire package of convert tracking device. The package includes a Pelican case, GC-101 tracker, RT-99 motion sensor board, and 6600mA battery. **P.S. CT-24 is not suggested to use on this application.**

Before start to operate RT-99 motion sensor board, we strongly recommend that the 6600mA be purchased from San Jose Navigation, Inc. directly. If you would like to use your own battery, please double check with Sanav Technical Department before usage.

Please refer to RT-99 accessories' picture as below:



1. RT-99 motion sensor board

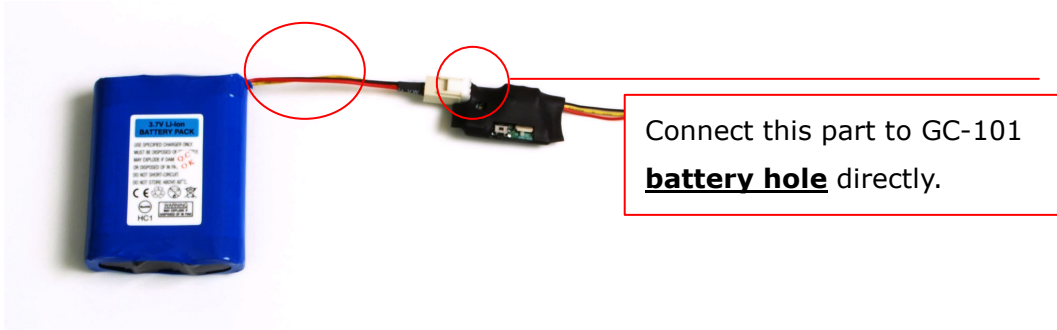


2. 6600mA Battery

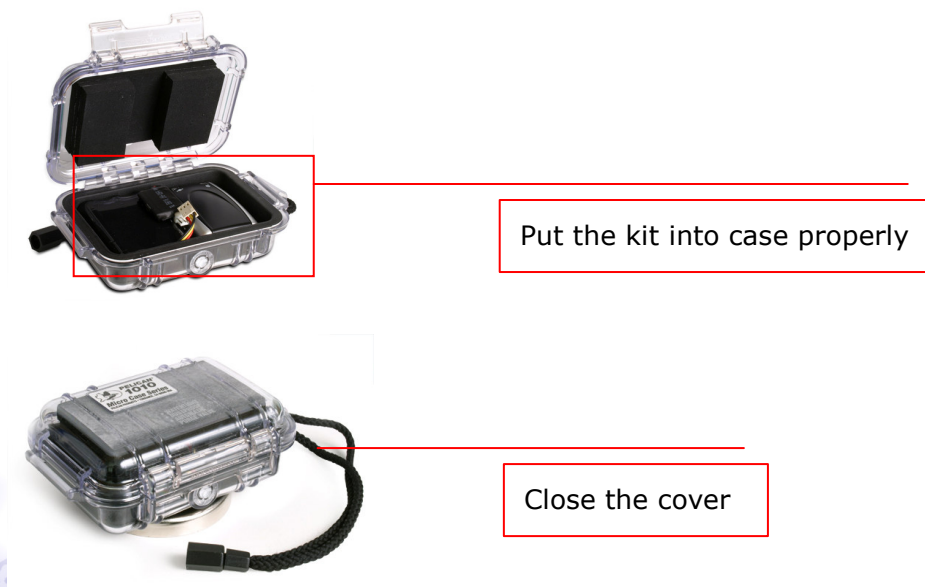
Chapter 2

This chapter will instruct you to install RT-99 motion sensor board.

1. Please connect the sensor board to battery.



2. Put the kit to the Pelican case.



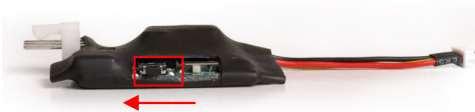
Note:

1. Please make sure the topside of GC-101 **is not face toward to the bottom side (magnet side).**
2. If you put the case **somewhere under the vehicle**, please **try to put the case in different places in order to have the best GPS signal reception.**

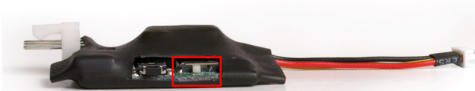
Chapter 3

At this chapter, you will learn how to operate RT-99 motion sensor board. The operation logic of RT-99 is when the car is being moved; it will supply the power to the tracker. The power supply time is according to **5, 10, 15 and 20 minutes**, and the users can define the power supplying time.

1. Please make sure the switch of RT-99 is moved to **left hand side**. Please refer to the picture as below:



2. Below is the picture of "Power supply time control **switch**"



1. **Check Current Status:** Press the button once. It will show you the current setting of power supply time.
2. **Define the Power Supply Time:** Press to button for **about 3 seconds**. When LED starts flashing, power supply time can be defined by **pressing the button again**. The LEDs indicate the duration. Please check out the diagram below for more information. To confirm setting, press the button for **about 3 seconds again**.

Please see the LED indication of power supply time to the GC-101 as below while pressing the switch:



Light yellow LED on the right hand side indicates the power will supply for 5 minutes.

Light yellow LED on the right hand side indicates the power will supply for 10 minutes.

Light yellow LED on the right hand side indicates the power will supply for 15 minutes.

Yellowish light on the both sides indicates the power will supply for 20 minutes.

©2008 San Jose Technology, Inc.
All specifications subject to change without notice.

The Setting of GC-101

It's suggested to send the auto report command to GC-101 by following:

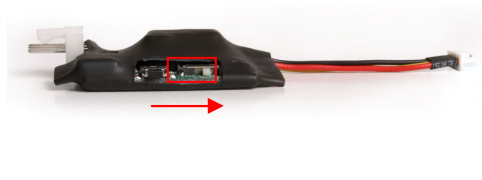
SMS command:

#username,0000,6,60,9999*

- Username: The user's ID of GC-101. The default user ID is "Username"
- 0000: The password of GC-101. The default is "0000".
- 60: The report interval of GC-101. The unit is in "second"
- 9999: Total report times to the terminal. 9999 indicates unlimited report by the interval. Please note it's strongly suggested to define the total report time by unlimited.

How to charge the battery?

1. Please move the RT-99's switch to the **right hand side**. Please refer to the picture as below:



2. Connector the wall charger to the **GC-101 15 pins connector**. Please refer to the picture as below:



Note:

It will take 5-6 hours to full charge the battery.