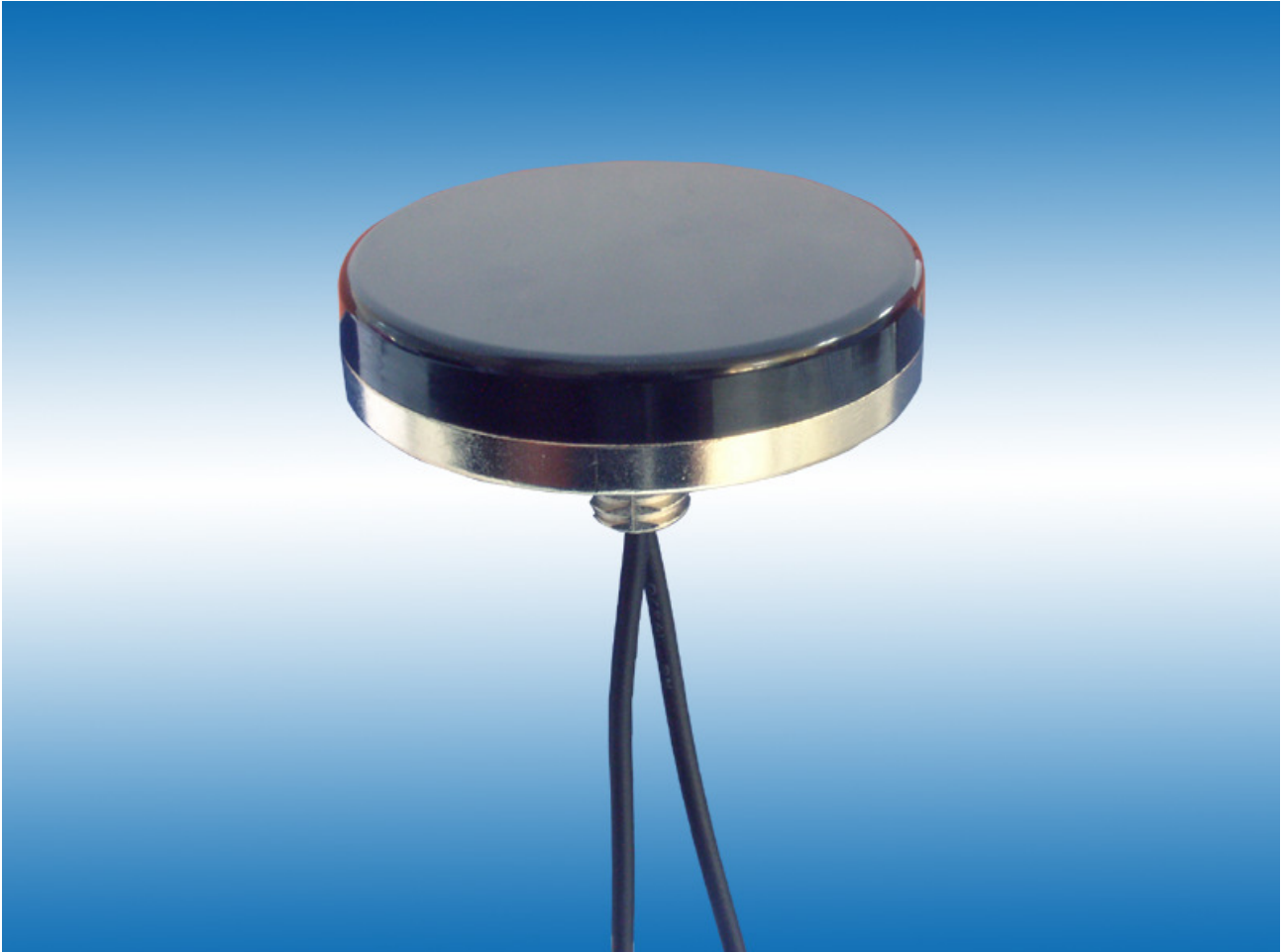


Quad-Band Antenna Series

MODEL: AU-3C-GSM

A combination of both GPS and GSM antennas that is designed mainly to simplify the need for an AVL or Fleet Management antenna system



This AU-3C-GSM, a member of our mobile antenna series coming up with dual-band features, is designed to simplify the need for an AVL or Fleet Management antenna systems. The combination of a high gain GPS antenna and a low profile and covert GSM antenna is highly ideal for those applications that require durability, small in size, covert installation and ruggedized construction, such as covering vehicle roof and trunk lid interior deck or dashboard.

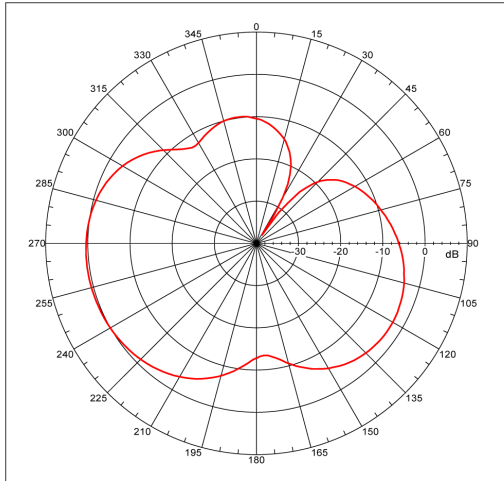
**Low Noise Figure/ Fully Weatherproof/ Ultra-high Sensitivity
/Compact Construction/ Excellent Temperature Stability**

Specification

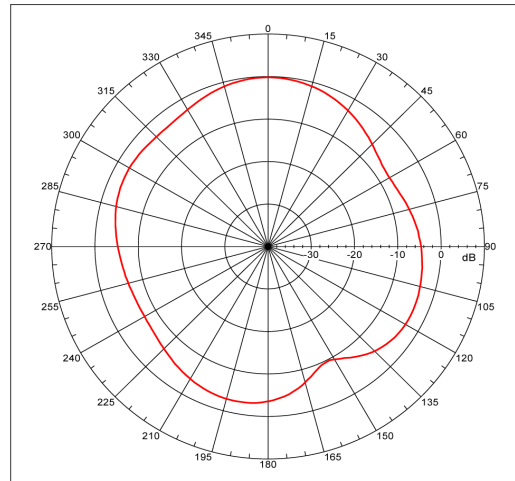
<i>SPECIFICATIONS</i>		
	GPS Antenna	GSM Antenna
Features	High performance GPS patch antenna with state-of-the-art low noise amplifier	Quad band GSM 850/900/1800/1900 MHz
Size	64.5mm(D) x 14mm(H)	
Frequency	1575.42 MHz	824~960 & 1710~1990 MHz
Polarization	RHCP (right hand circular polarization)	--
Gain	27 dB typically	1.0 dBi
Noise Figure	1.8 max.	-----
Attenuation	20dB min. @ F0+/-50MHz	-----
Band Width	10 MHz	72 MHz for frequency of 824~896 MHz 80 MHz for frequency of 880~960 MHz 170 MHz for frequency of 1710~1880 MHz 140 MHz for frequency of 1850~1990 MHz
VSWR	≤ 1.5	≤ 1.5
Impedance	50 ohm	50 ohm
Power Supply	Power Consumption: 2.7~5.5 VDC / 13 mA	Power Handling Capacity: 10 W
Cable & Connector	3m RG-174 FME Connector	3m RG-174 SMA Connector
Operating Temperature	-40°C ~+85°C	-40°C ~+85°C
Storage Temperature	-45°C ~+100°C	-45°C ~+100°C

Welcome custom design for AMPS frequencies!

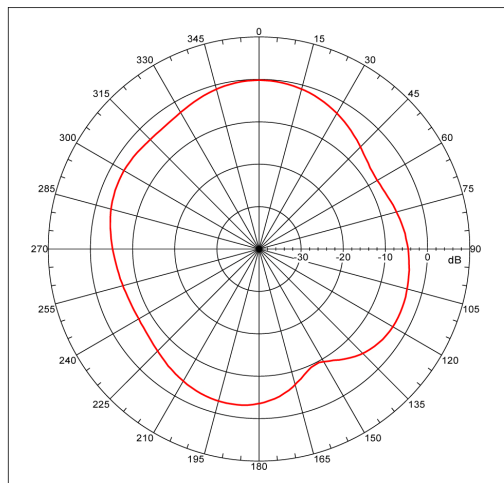
Frequency @ 850MHz



Frequency @ 1900MHz



Frequency @ 900MHz



Frequency @ 1800MHz

