

Combo Antenna Series



©2008 San Jose Technology, Inc. All specifications subject to change without notice.

AU-3C-915 **User Manual** **Version A**

August 28 2002

SANJOSE NAVIGATION, INC.

9F NO. 105 SHI-CHENG ROAD, PAN-CHIAO CITY

TAIPEI HSIEN, TAIWAN, R.O.C.

TEL: 886-2-26879500

FAX: 886-2-26878893

WWW.SANAV.COM



www.sanav.com



Content

CHAPTER 1 OVERVIEW	3
1.1 PACKAGE CONTENT	4
CHAPTER 2 SPECIFICATION	5
CHAPTER 3 WARRANTY	錯誤! 尚未定義書籤。

©2008 San Jose Technology, Inc.
All specifications subject to change without notice.

Chapter 1 Overview

Dual-Band Antenna Series

MODEL: AU-3C-915

A combination of both GPS and GSM antennas that is designed mainly to simplify the need for an AVL or Fleet Management antenna system



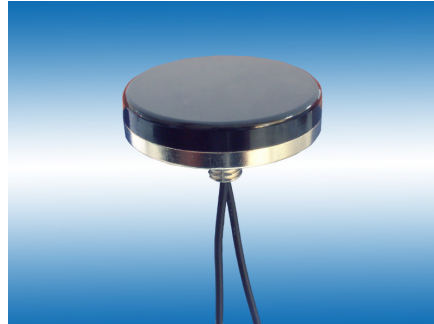
This AU-3C-915, a member of our mobile antenna series coming up with dual-band features, is designed to simplify the need for an AVL or Fleet Management antenna systems. The combination of a high gain GPS antenna and a low profile and covert GSM antenna is highly ideal for those applications that requires durability, small in size, covert installation and ruggedized construction, such as covering vehicle roof and trunk lid interior deck or dashboard.

Features

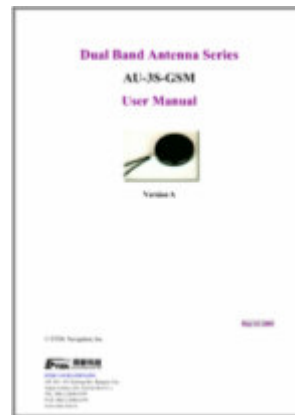
1. Low Noise Figure
2. Fully Weatherproof
3. Ultra-high Sensitivity
4. Compact Construction
5. Excellent Temperature Stability

1.1 Package Content

1. AU-3C-915 Body (including a pair of dual-band cables) built in with a dual-band antenna



2. User Manual



©2008 San Jose Technology, Inc.
All specifications subject to change without notice.

Chapter 2 Specification

	GPS Antenna	GSM Antenna
Features	High performance GPS patch antenna with state-of-the-art low noise amplifier	915 MHz
Size	64.5mm(D) x 14mm(H)	
Frequency	1575.42 MHz	902 ~ 928 MHz
Polarization	RHCP (right hand circular polarization)	--
Gain	26 dB typically	-9 dBi
Noise Figure	1.5 max.	-----
Attenuation	20dB min. @ F0+/-50MHz	-----
Band Width	10 MHz	26 MHz
VSWR	< 2.0	< 2.0
Impedance	50 ohm	50 ohm
Power Supply	Power Consumption: 2.7~5.5 VDC / 13 mA	Power Handling Capacity: 10 W
Cable & Connector	3m RG-174 SMA Connector	3m RG-174 SMA Connector
Operating Temperature	-40°C ~+85°C	-40°C ~+85°C
Storage Temperature	-45°C ~+100°C	-45°C ~+100°C

Welcome custom design for AMPS frequencies!

Chapter 3 WARRANTY

LIMITED WARRANTY

SANJOSE NAVIGATION, INC. expressly warrants that for a period of one (1) year from the date of purchase. Our accessories will be free of defects in material (parts) and workmanship (labor). Within the warranty period, a unit will be tested, repaired, or replaced at our option at no charge.

If your unit is out warranty, we will quote repair charges necessary to bring your unit up to factory standards.

THIS WARRANTY APPLIES ONLY TO ORIGINAL PURCHASE

Any unit under warranty should be shipped prepaid to our factory. Warranty replacements will take approximately ninety (90) days.

WARRANTY EXCLUSION

THE FOREGOING EXPRESS WARRANTY IS MADE IN LIEU OF ALL OTHER PRODUCT WARRANTIES, EXPRESSED AND IMPLIED, INCLUDING MERCHANTABILITY AND FITNESS FOR A PARTICULAR PURPOSE WHICH ARE SPECIFICALLY DISCLAIMED. The express warranty will not apply to defects or damage due to accidents, neglect, misuse, alterations, operator error, or failure to properly maintain, clean or repair products.

LIMIT OF LIABILITY

In no event will San Jose Navigation, Inc. or any seller will be responsible or liable for any injury, loss or damage, direct or consequential, arising out of the use or the inability to use the product. Before using, users shall determine in the suitability of the product for their intended use, and users assume all risk and liability whatsoever in connection therewith.

PURCHASER'S DUTIES

The purchaser must return the unit postpaid, with proof of the date of original purchase with the return address to:

SANJOSE NAVIGATION, INC.

9F NO. 105 SHI-CHENG ROAD, PAN-CHIAO CITY

TAIPEI HSIEN, TAIWAN, R.O.C.

TEL: 886-2-26879500 FAX: 886-2-26878893

WWW.SANAV.COM Technical Support: san.jose@sanav.com

